

	<b>Panchakshri Shivacharya Trust's</b> <b>Channabasweshwar Pharmacy College (Degree)</b> Kava Road, Basweshwar Chowk, Latur-413512 (Maharashtra) Phone No. (02382) 240192, Fax-(02382) 243855 Email- channabasweshwar@gmail.com Website- www.cdphl.org	Est :- 1973
Approved by:- Govt. Of Maharashtra, AICTE & PCI New Delhi, Affiliated to :- S.R.T.M.University Nanded.		
DTE Code :- 2253, University Code :- 947		

### CLASSROOMS

Classrooms are well ventilated and provided with ICT enabled facilities viz. LCD projectors, CPU, platforms, podiums and White boards, CCTV camera to conduct academics by blended teaching learning methods includes use of PowerPoint presentations., educational videos through software's like Google classroom, zoom platform, LMS by Vmedulife software.

Sr.No.	Code	List of Classroom	Floor	Area in SQ Mtr	Course	Facility
<b>Building - A</b>						
1	101	Classroom-1	First Floor	75.51	D. Pharm	For Teaching and Learning Process
2	102	Classroom-2	First Floor	92.89	D. Pharm	
3	104	Classroom-3	First Floor	75.69	M. Pharm	
4	106	Classroom-4	First Floor	75.38	M. Pharm	
5	107	Classroom-5	First Floor	75.45	M. Pharm	
6	205	Classroom-6	Second Floor	75.12	M. Pharm	
<b>Building - B</b>						
7	119	Classroom-7	First Floor	125.92	B. Pharm	For Teaching and Learning Process
8	120	Classroom-8	First Floor	125.92	B. Pharm	
9	215	Classroom-9	Second Floor	95.12	Pharm D	
10	216	Classroom-10	Second Floor	60.00	Pharm D	

No of Classrooms	Building	Ground Floor	First Floor	Second Floor
	A	-	05	01
	B	-	02	02
		<b>00</b>	<b>07</b>	<b>03</b>
	<b>Total Classrooms</b>	<b>10</b>		



Panchakshri Shivacharya Trust's

Est :- 1973

## Channabasweshwar Pharmacy College (Degree)

Kava Road, Basweshwar Chowk, Latur-413512 (Maharashtra)

Phone No. (02382) 240192, Fax-(02382) 243855

Email- channabasweshwar@gmail.com Website- www.cdphl.org

Approved by:- Govt. Of Maharashtra, AICTE & PCI New Delhi, Affiliated to :- S.R.T.M.University Nanded.

DTE Code :- 2253, University Code :- 947

### Classroom with LCD Projector & CCTV

#### External View of Classroom-1



#### Internal View of Classroom-1





Panchakshri Shivacharya Trust's

Est :- 1973

## Channabasweshwar Pharmacy College (Degree)

Kava Road, Basweshwar Chowk, Latur-413512 (Maharashtra)

Phone No. (02382) 240192, Fax-(02382) 243855

Email- [channabasweshwar@gmail.com](mailto:channabasweshwar@gmail.com) Website- [www.cdphl.org](http://www.cdphl.org)

Approved by:- Govt. Of Maharashtra, AICTE & PCI New Delhi, Affiliated to :- S.R.T.M.University Nanded.

DTE Code :- 2253, University Code :- 947

### Classroom with Smartboard & CCTV

#### External View of Classroom-2



#### Internal View of Classroom-2





Panchakshri Shivacharya Trust's

Est :- 1973

## Channabasweshwar Pharmacy College (Degree)

Kava Road, Basweshwar Chowk, Latur-413512 (Maharashtra)

Phone No. (02382) 240192, Fax-(02382) 243855

Email- [channabasweshwar@gmail.com](mailto:channabasweshwar@gmail.com) Website- [www.cdphl.org](http://www.cdphl.org)

Approved by:- Govt. Of Maharashtra, AICTE & PCI New Delhi, Affiliated to :- S.R.T.M.University Nanded.

DTE Code :- 2253, University Code :- 947

### Classroom with LCD Projector

#### External View of Classroom-3



#### Internal View of Classroom-3





Panchakshri Shivacharya Trust's

Est :- 1973

## Channabasweshwar Pharmacy College (Degree)

Kava Road, Basweshwar Chowk, Latur-413512 (Maharashtra)

Phone No. (02382) 240192, Fax-(02382) 243855

Email- channabasweshwar@gmail.com Website- www.cdphl.org

Approved by:- Govt. Of Maharashtra, AICTE & PCI New Delhi, Affiliated to :- S.R.T.M.University Nanded.

DTE Code :- 2253, University Code :- 947

### Classroom with LCD Projector & CCTV

#### External View of Classroom-4



#### Internal View of Classroom-4





Panchakshri Shivacharya Trust's

Est :- 1973

## Channabasweshwar Pharmacy College (Degree)

Kava Road, Basweshwar Chowk, Latur-413512 (Maharashtra)

Phone No. (02382) 240192, Fax-(02382) 243855

Email- [channabasweshwar@gmail.com](mailto:channabasweshwar@gmail.com) Website- [www.cdphl.org](http://www.cdphl.org)

Approved by:- Govt. Of Maharashtra, AICTE & PCI New Delhi, Affiliated to :- S.R.T.M.University Nanded.

DTE Code :- 2253, University Code :- 947

### Classroom with LCD Projector

#### External View of Classroom-5



#### Internal View of Classroom-5





Panchakshri Shivacharya Trust's

Est :- 1973

# Channabasweshwar Pharmacy College (Degree)

Kava Road, Basweshwar Chowk, Latur-413512 (Maharashtra)

Phone No. (02382) 240192, Fax-(02382) 243855

Email- channabasweshwar@gmail.com Website- www.cdphl.org

Approved by:- Govt. Of Maharashtra, AICTE & PCI New Delhi, Affiliated to :- S.R.T.M.University Nanded.

DTE Code :- 2253, University Code :- 947

## Classroom with LCD Projector & CCTV

### External View of Classroom-6



Latur, Maharashtra, India  
10, Kava Rd, Basweshwar Chowk, Latur, Maharashtra 413531, India  
Lat 18.383751°  
Long 76.581158°  
08/01/24 11:57 AM GMT +05:30

### Internal View of Classroom-6



Latur, Maharashtra, India  
10, Kava Rd, Basweshwar Chowk, Latur, Maharashtra 413531, India  
Lat 18.383751°  
Long 76.581158°  
08/01/24 11:57 AM GMT +05:30



Latur, Maharashtra, India  
10, Kava Rd, Basweshwar Chowk, Latur, Maharashtra 413531, India  
Lat 18.383808°  
Long 76.581196°  
09/02/23 04:05 PM GMT +05:30



Panchakshri Shivacharya Trust's

Est :- 1973

## Channabasweshwar Pharmacy College (Degree)

Kava Road, Basweshwar Chowk, Latur-413512 (Maharashtra)

Phone No. (02382) 240192, Fax-(02382) 243855

Email- [channabasweshwar@gmail.com](mailto:channabasweshwar@gmail.com) Website- [www.cdphl.org](http://www.cdphl.org)

Approved by:- Govt. Of Maharashtra, AICTE & PCI New Delhi, Affiliated to :- S.R.T.M.University Nanded.

DTE Code :- 2253, University Code :- 947

### Classroom with Smartboard & CCTV

#### External View of Classroom-7



#### Internal View of Classroom-7







Panchakshri Shivacharya Trust's

Est :- 1973

## Channabasweshwar Pharmacy College (Degree)

Kava Road, Basweshwar Chowk, Latur-413512 (Maharashtra)

Phone No. (02382) 240192, Fax-(02382) 243855

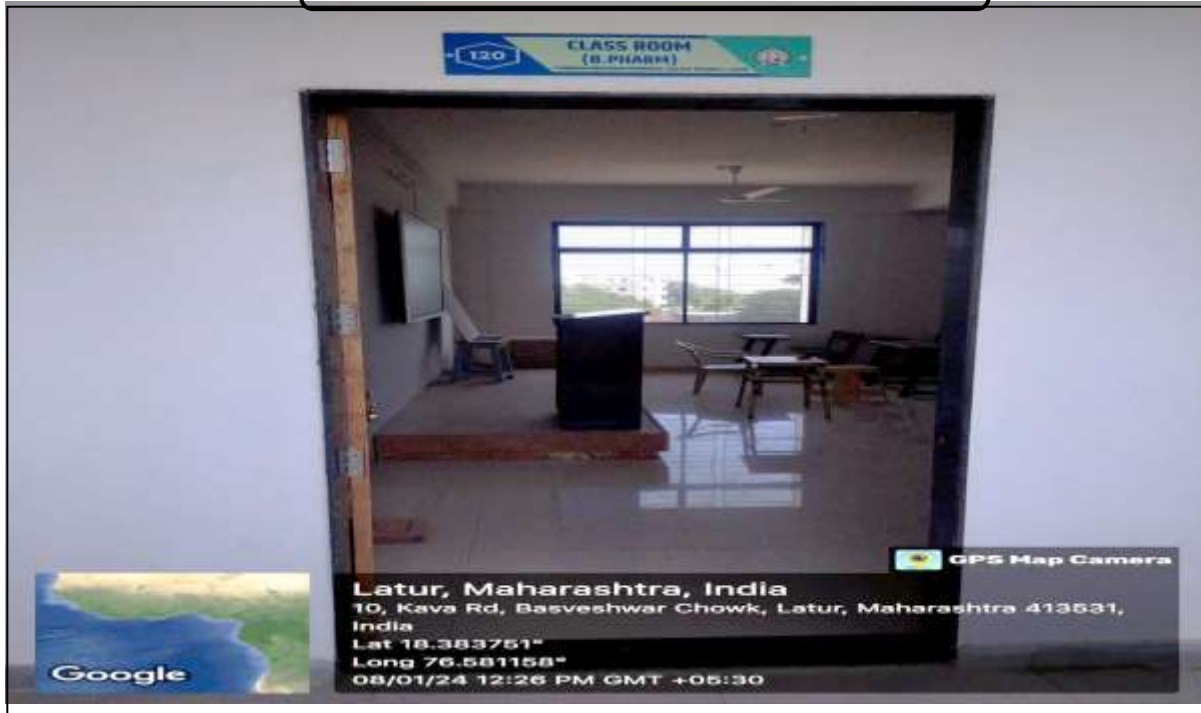
Email- channabasweshwar@gmail.com Website- www.cdphl.org

Approved by:- Govt. Of Maharashtra, AICTE & PCI New Delhi, Affiliated to :- S.R.T.M.University Nanded.

DTE Code :- 2253, University Code :- 947

### Classroom with Smartboard & CCTV

#### External View of Classroom-8



#### Internal View of Classroom-8





Panchakshri Shivacharya Trust's

Est :- 1973

## Channabasweshwar Pharmacy College (Degree)

Kava Road, Basweshwar Chowk, Latur-413512 (Maharashtra)

Phone No. (02382) 240192, Fax-(02382) 243855

Email- [channabasweshwar@gmail.com](mailto:channabasweshwar@gmail.com) Website- [www.cdphl.org](http://www.cdphl.org)

Approved by:- Govt. Of Maharashtra, AICTE & PCI New Delhi, Affiliated to :- S.R.T.M.University Nanded.

DTE Code :- 2253, University Code :- 947

### Classroom with Smartboard & CCTV

#### External View of Classroom-9



#### Internal View of Classroom-9





Panchakshri Shivacharya Trust's

Est :- 1973

## Channabasweshwar Pharmacy College (Degree)

Kava Road, Basweshwar Chowk, Latur-413512 (Maharashtra)

Phone No. (02382) 240192, Fax-(02382) 243855

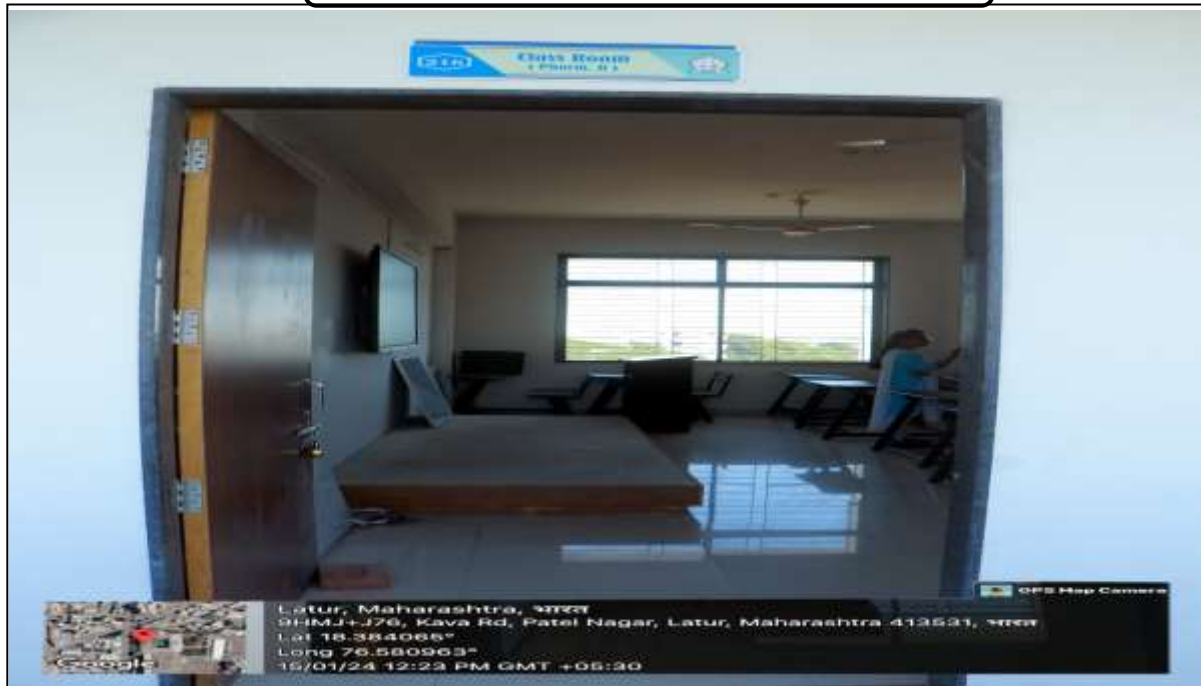
Email- [channabasweshwar@gmail.com](mailto:channabasweshwar@gmail.com) Website- [www.cdphl.org](http://www.cdphl.org)

Approved by:- Govt. Of Maharashtra, AICTE & PCI New Delhi, Affiliated to :- S.R.T.M.University Nanded.

DTE Code :- 2253, University Code :- 947

### Classroom with Smartboard & CCTV

#### External View of Classroom-10



#### Internal View of Classroom-10

